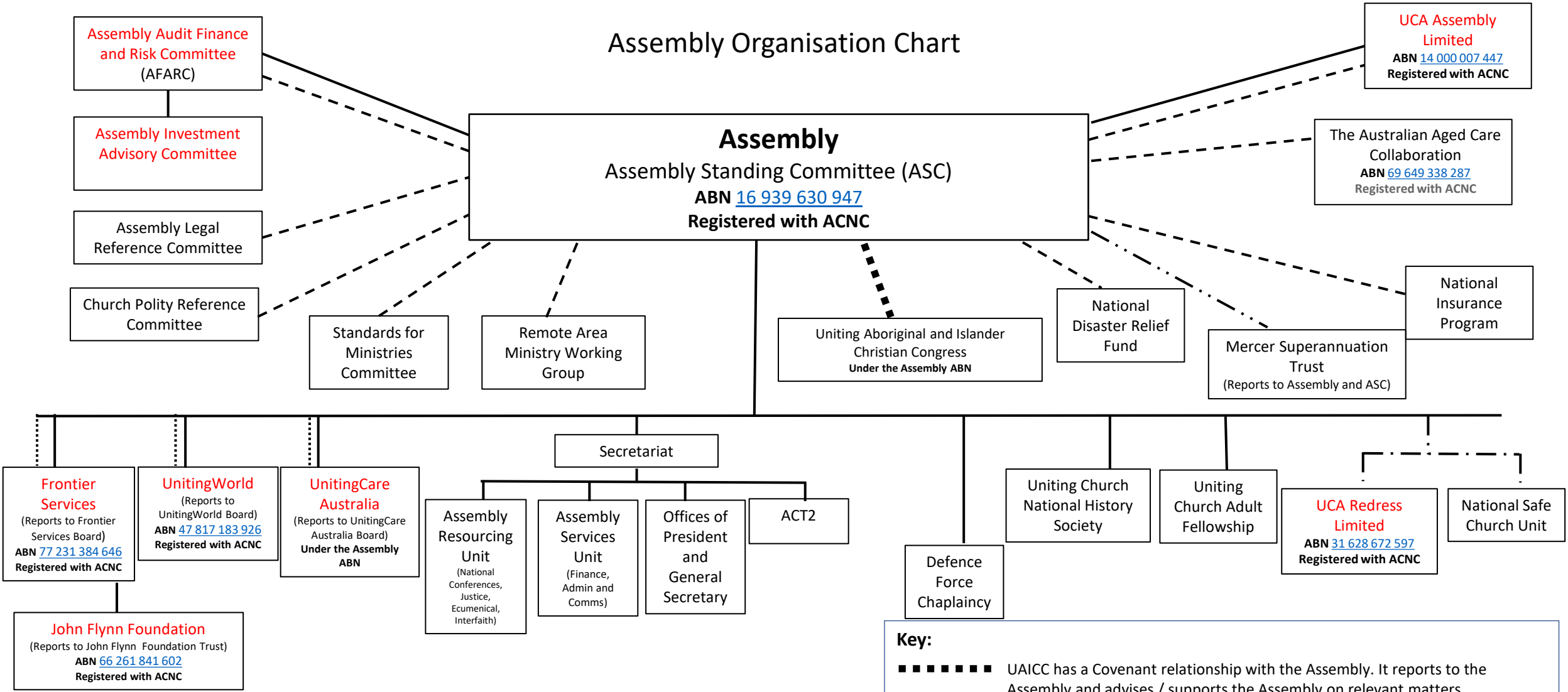


# Assembly Organisation Chart



**Notes:**

- The Assembly Standing Committee (ASC) has a remit of delegations, mandates and governance arrangements to Agencies (UnitingCare Australia, Frontier Services and UnitingWorld).
- Agencies and Units :
  - Have various boards, committees and reference groups
  - Have advisory and specialist functions and report to the Assembly and ASC
- Management accountabilities and reporting are not included in this chart.
- Further information about Agencies and Units, the Assembly and the ASC can be found at [www.uniting.church](http://www.uniting.church)

**Key:**

- ■ ■ ■ ■ UAICC has a Covenant relationship with the Assembly. It reports to the Assembly and advises / supports the Assembly on relevant matters.
- Reports
- - - - - Advise / support the work of ASC
- ..... ASC delegation to Boards
- . - . - Report to Assembly and ASC along with Synods in shared governance model
- . . - . . Mercer Superannuation Trust (Formerly Beneficiary Fund)