

## COMPLAINTS AGAINST MEMBERS

Complaint against Member/Adherent  
(excludes allegations of sexual misconduct)

Allegations of sexual misconduct dealt with in accordance with *Assembly's Member or Adherent Sexual Abuse and Sexual Misconduct Complaints Policy*

Ordinary Member/Adherent

Church Councillor

Complaint goes to Church Council

Complaint goes to Presbytery

Advise the Synod and copy of complaint given to Church Council

Advise the Presbytery & Synod

Dealt with through visitation, pastoral counsel or guidance

Dealt with through visitation, pastoral counsel or guidance

Church Council may suspend membership of Councillor & must notify Comp & Resp & Pres Chair of action.

Church Council can request Presbytery to deal with the complaint

Restoration of relationship to the life of the Church successful – No Further Action Required

Restoration of Relationship to the life of the Church unsuccessful

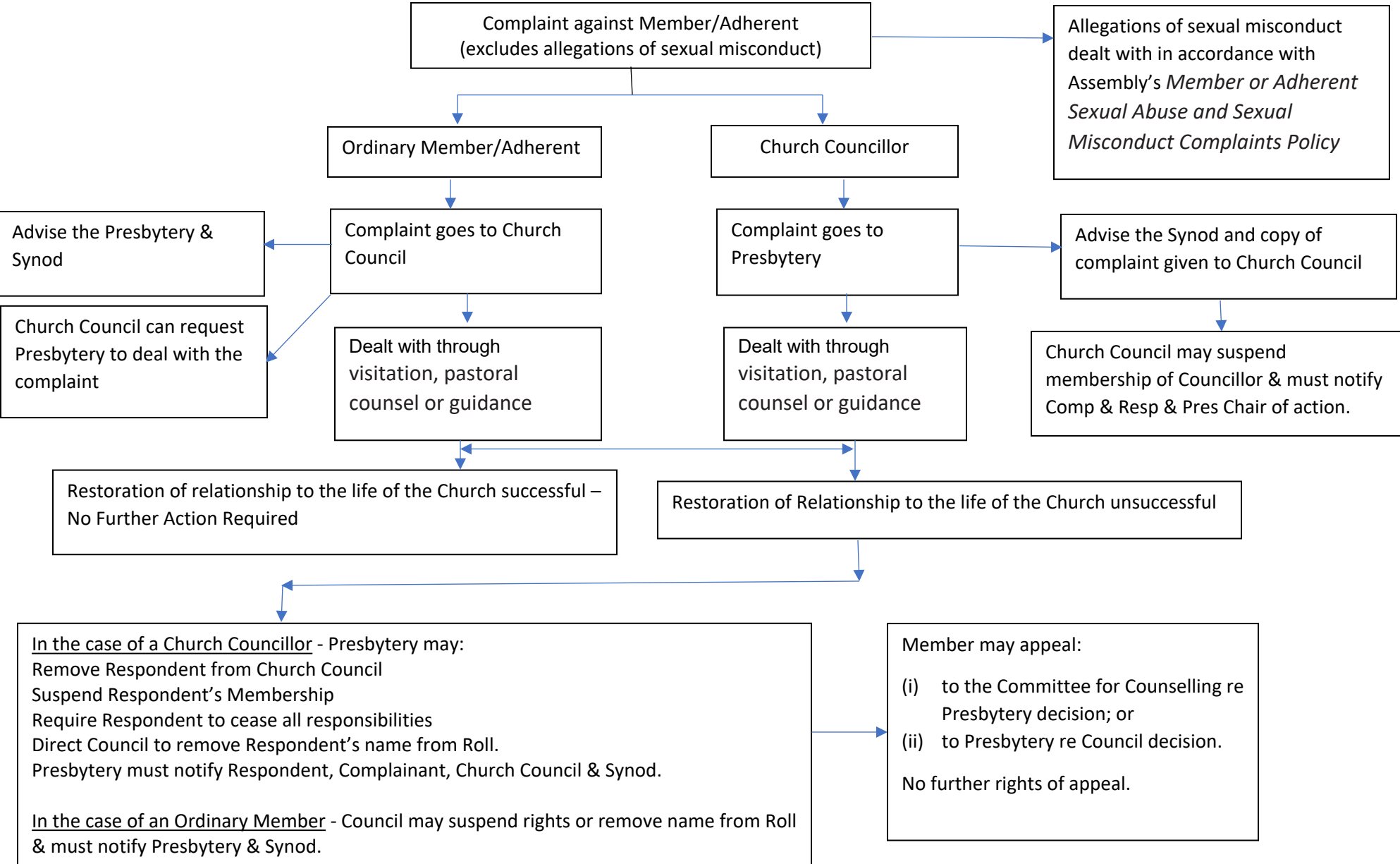
In the case of a Church Councillor - Presbytery may:  
 Remove Respondent from Church Council  
 Suspend Respondent's Membership  
 Require Respondent to cease all responsibilities  
 Direct Council to remove Respondent's name from Roll.  
 Presbytery must notify Respondent, Complainant, Church Council & Synod.

In the case of an Ordinary Member - Council may suspend rights or remove name from Roll & must notify Presbytery & Synod.

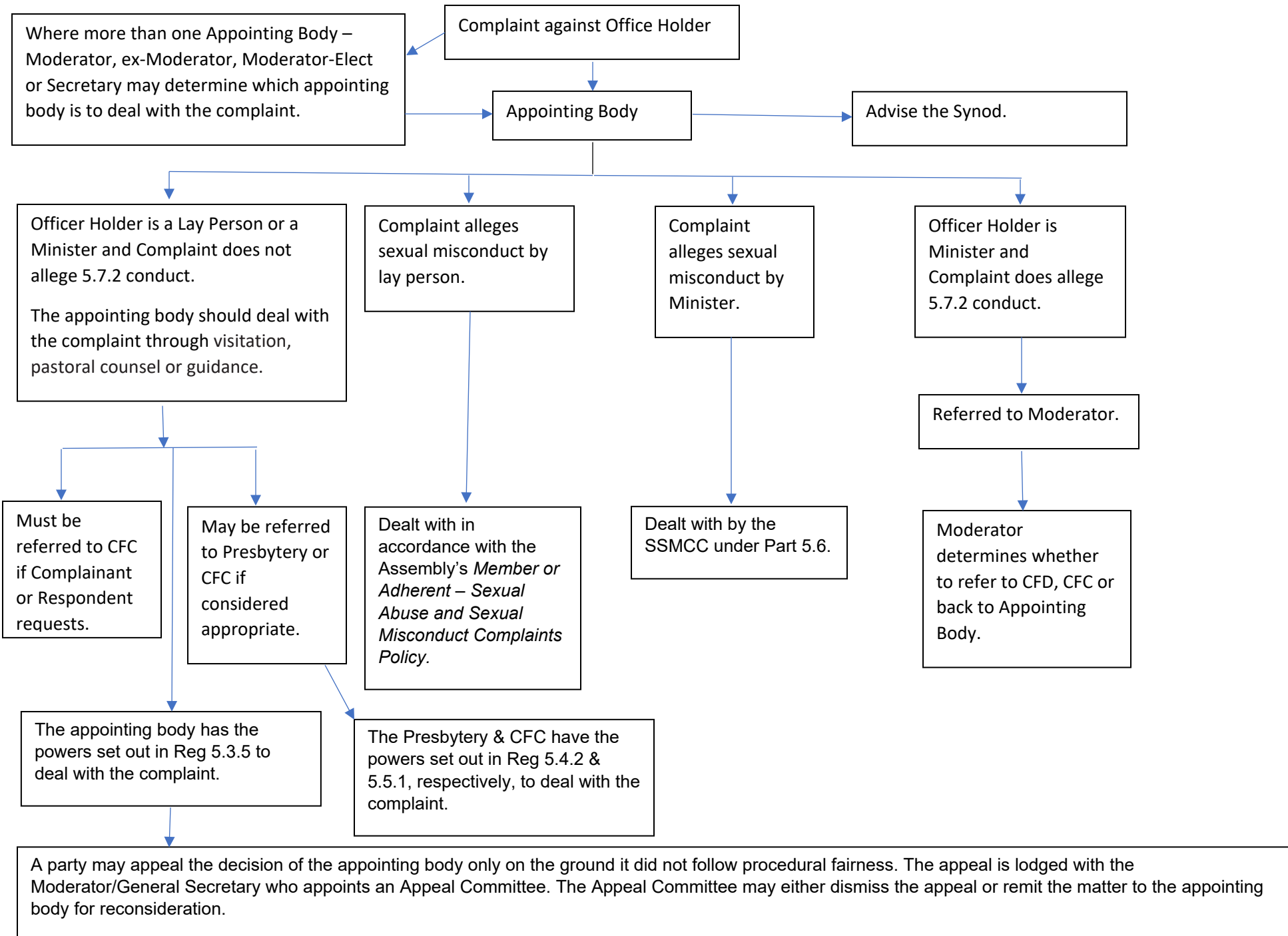
Member may appeal:

- (i) to the Committee for Counselling re Presbytery decision; or
- (ii) to Presbytery re Council decision.

No further rights of appeal.



## COMPLAINTS AGAINST OFFICE HOLDERS



**COMPLAINTS AGAINST MINISTERS**

**PRESBYTERY**

Complaint against Minister

Where complaint alleges conduct that warrants recognition being withdrawn – such complaint is referred to the Moderator

Moderator determines whether to refer to CFD, CFC or back to Presbytery Chairperson.

Chairperson of Presbytery

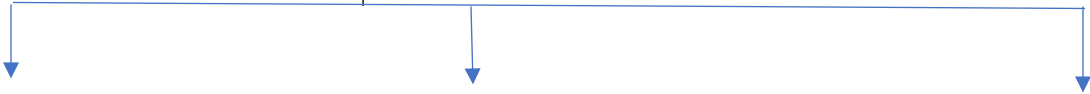
Complaint against Chairperson

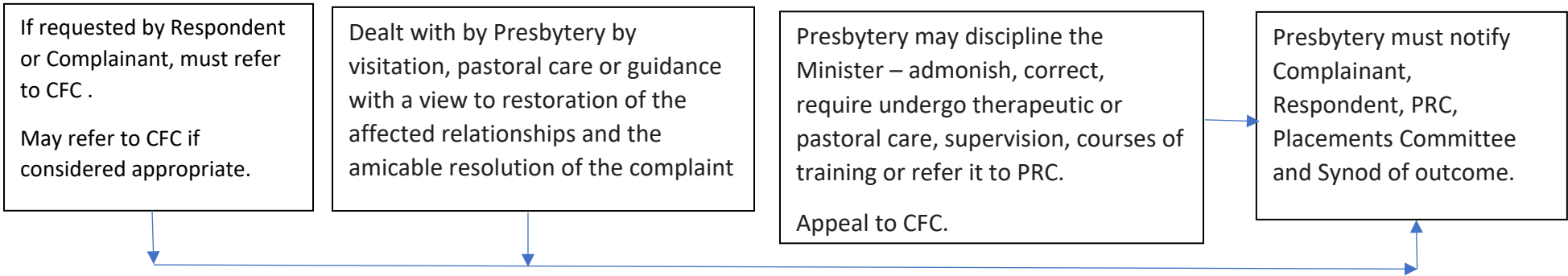
Complaint may be made to CFC by Gen Sec if directed by Mod, Synod or SSC.

An 'appointing body' may refer a complaint against a Minister to the Presbytery Chairperson to deal with.

Not in their capacity as Chairperson – complaint made to Secretary who refers complaint to CFC and reports referral to PRC & Synod.

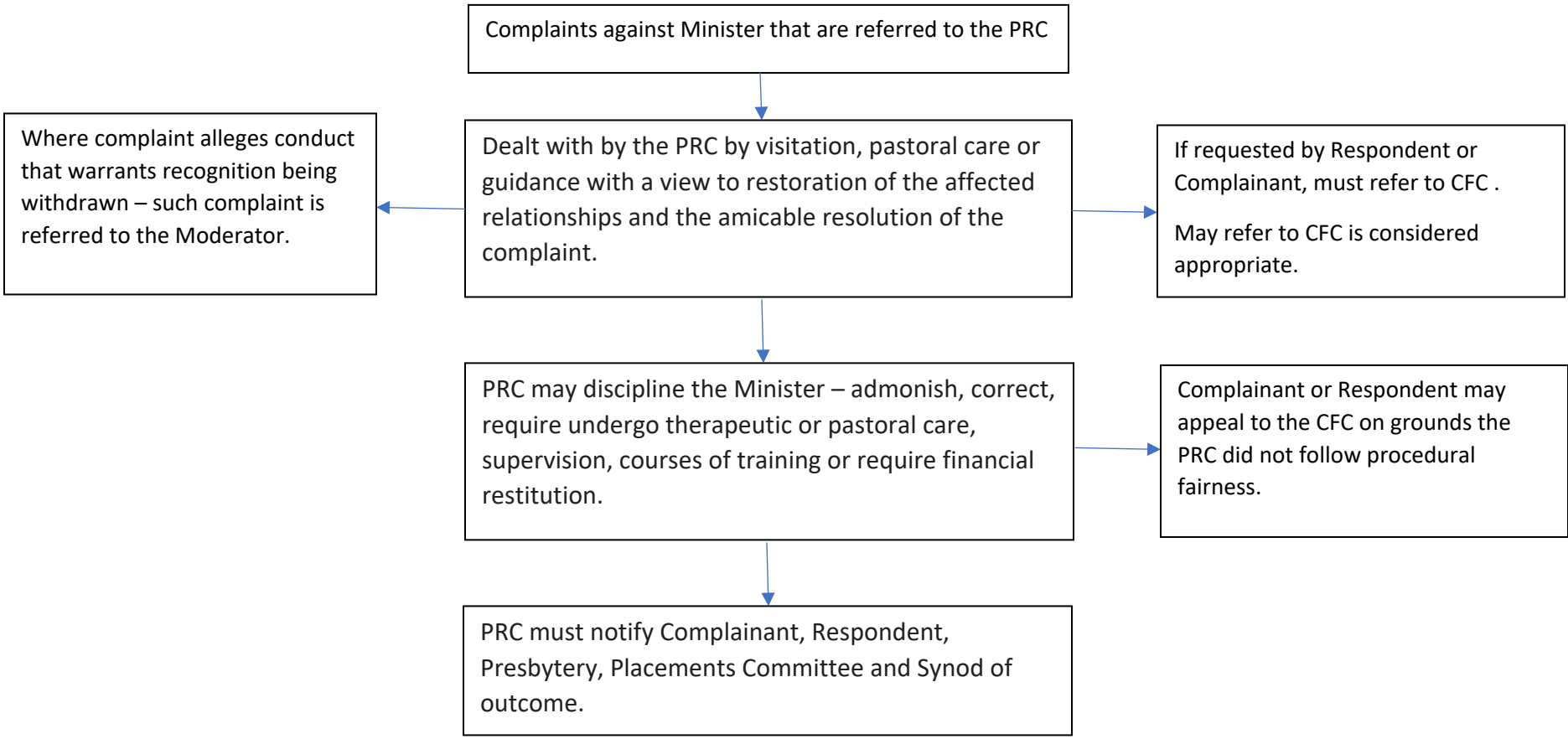
In their capacity as Chairperson – complaint made to Presbytery (as appointing body) & dealt with under Part 5.3.





**COMPLAINTS AGAINST MINISTERS**

**PASTORAL RELATIONS COMMITTEE**



## COMPLAINTS AGAINST MINISTERS

### COMMITTEE FOR COUNSELLING

